

# **Network Video Recorder (NVR) Operation Manual**

**Version 1.16**

**Content**

**I. Software Installation-----3**

**II. System Login -----10**

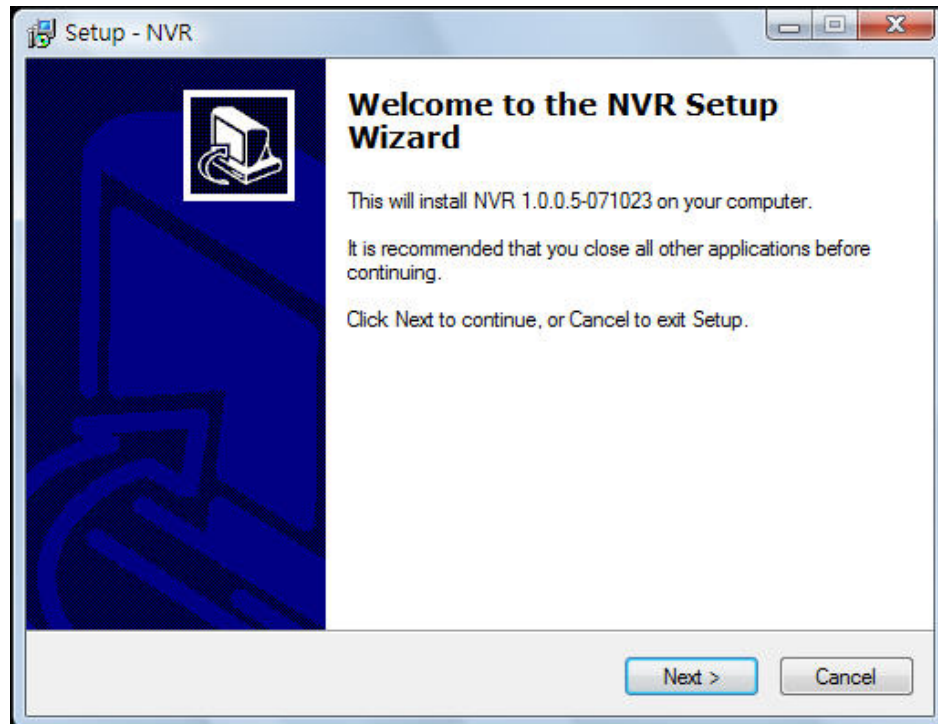
**III. System Operation-----11**

# I. Software Installation

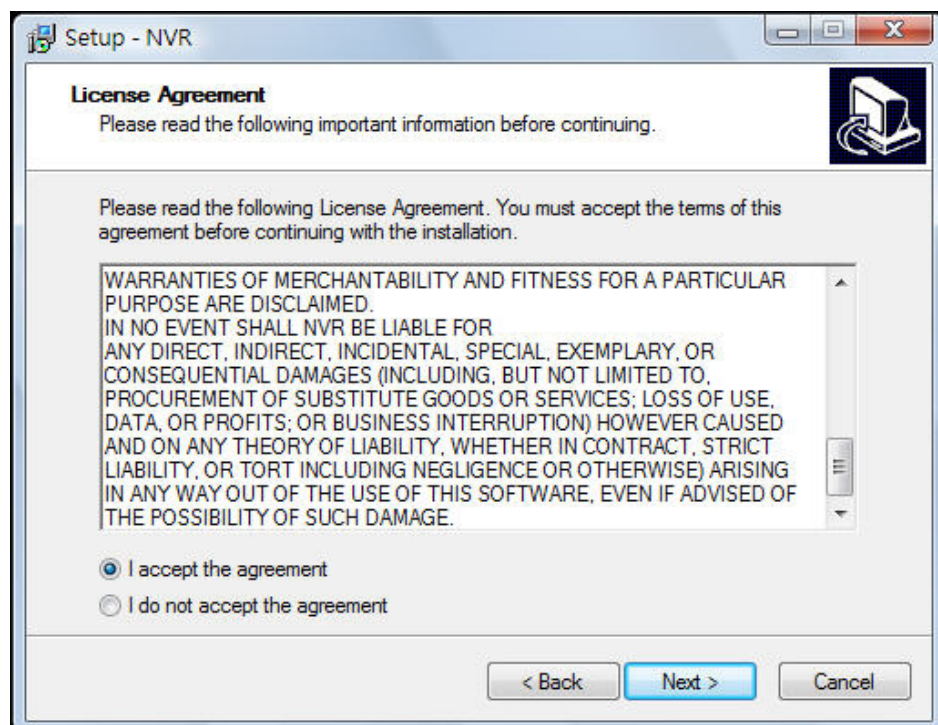
NVR: Network Video Recorder

## 1. Start

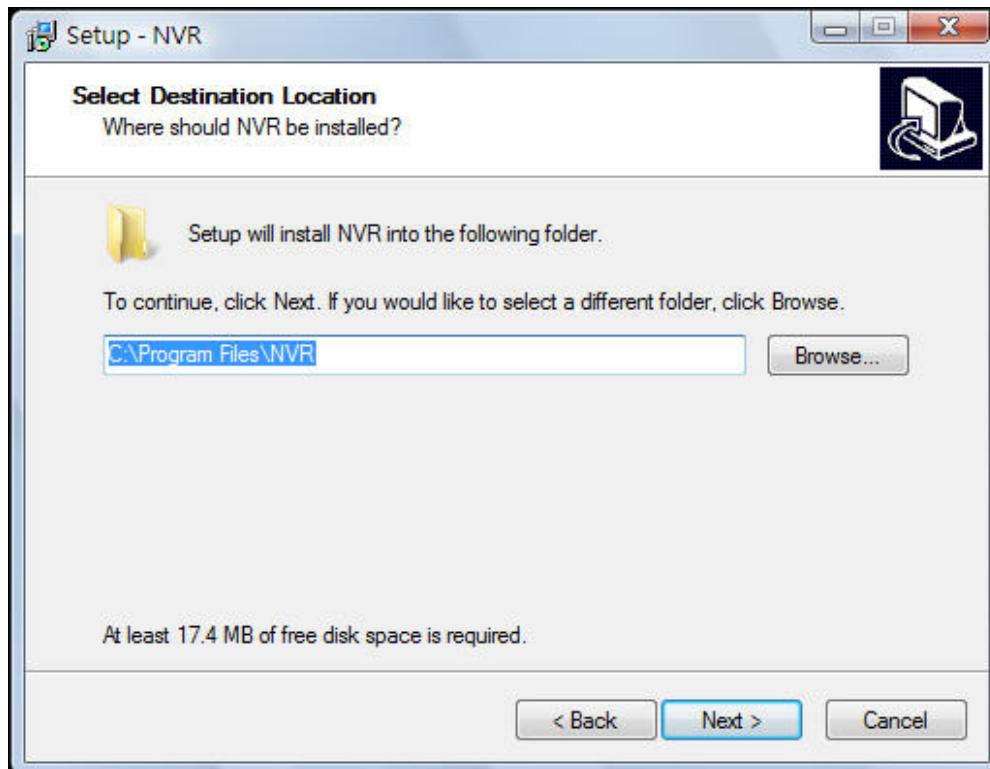
Click Recording Software Setup.exe from the NVR AP folder on the attached CD.  
Enter the setup mode.



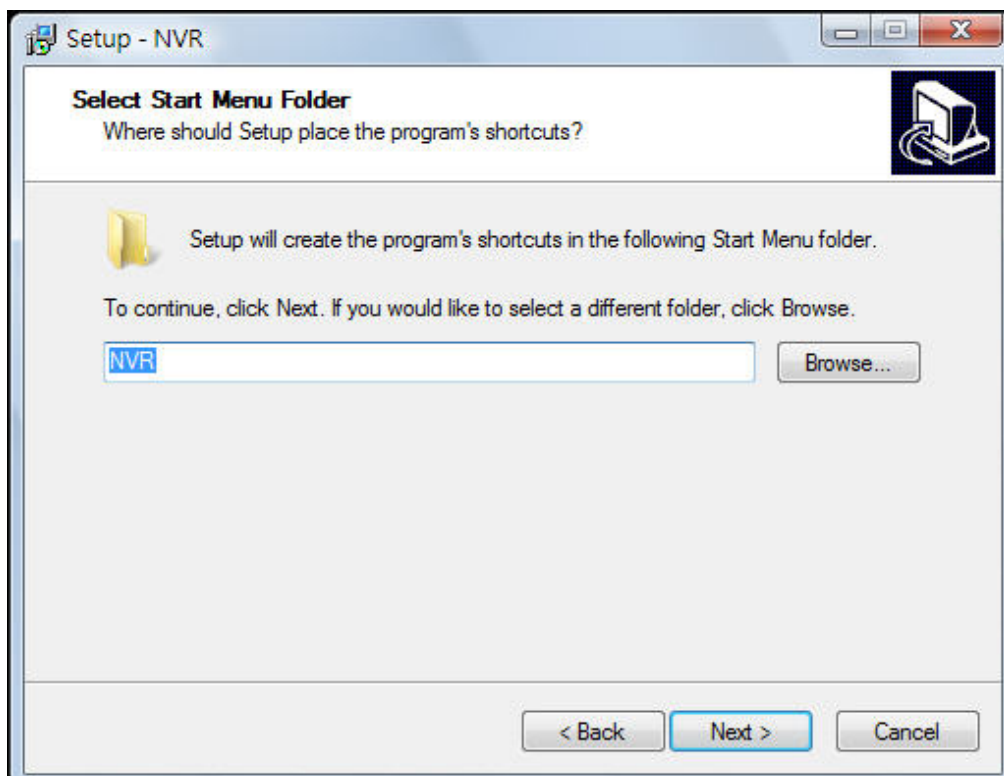
2. Click **I accept the agreement** and select **Next** to continue.



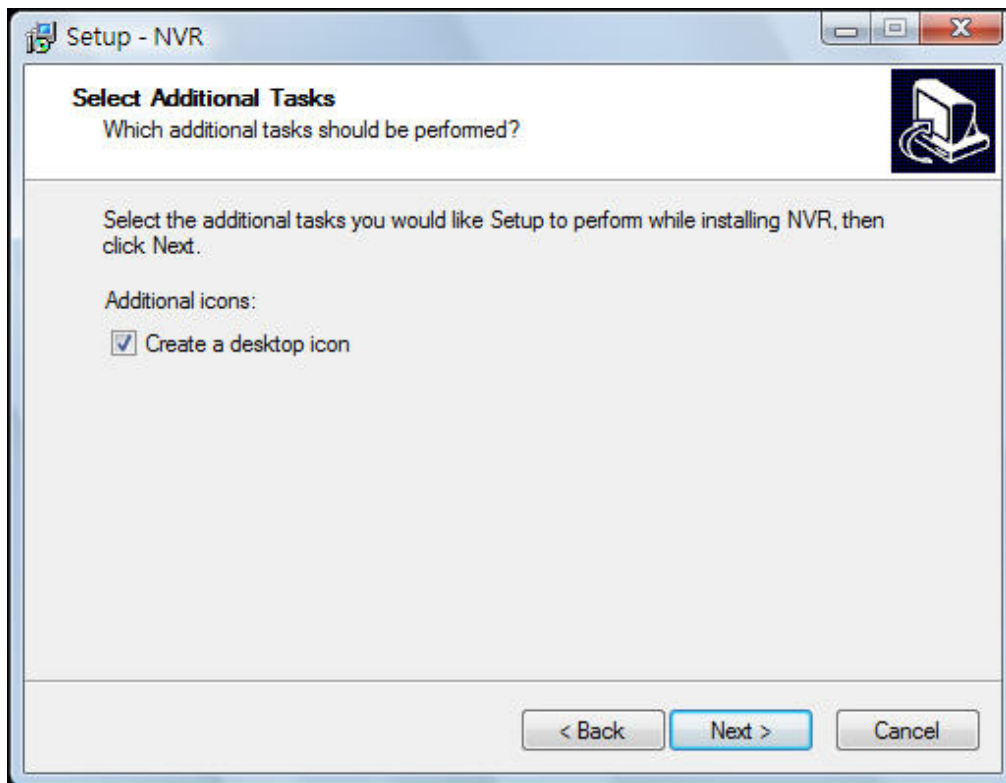
3. Select a folder for installation of the software. The default path is C:\Program Files\NVR. Click **Next** to continue if you want to use the default path.



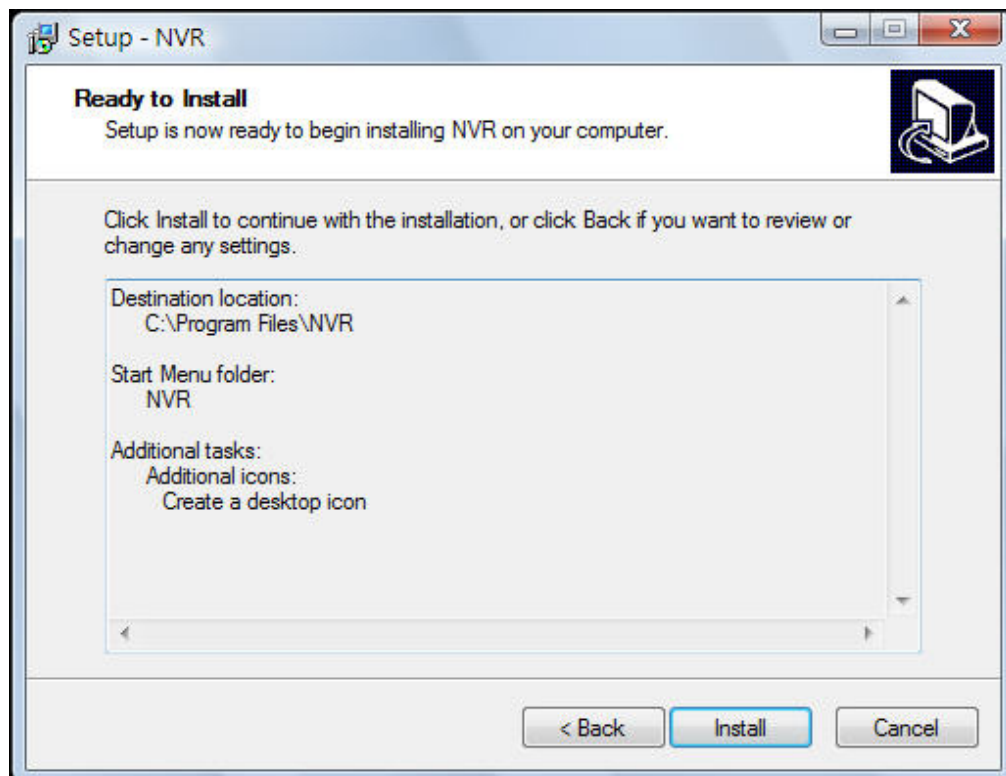
4. The Start Menu folder is NVR by default. If you want to use this folder, click **Next** to continue.



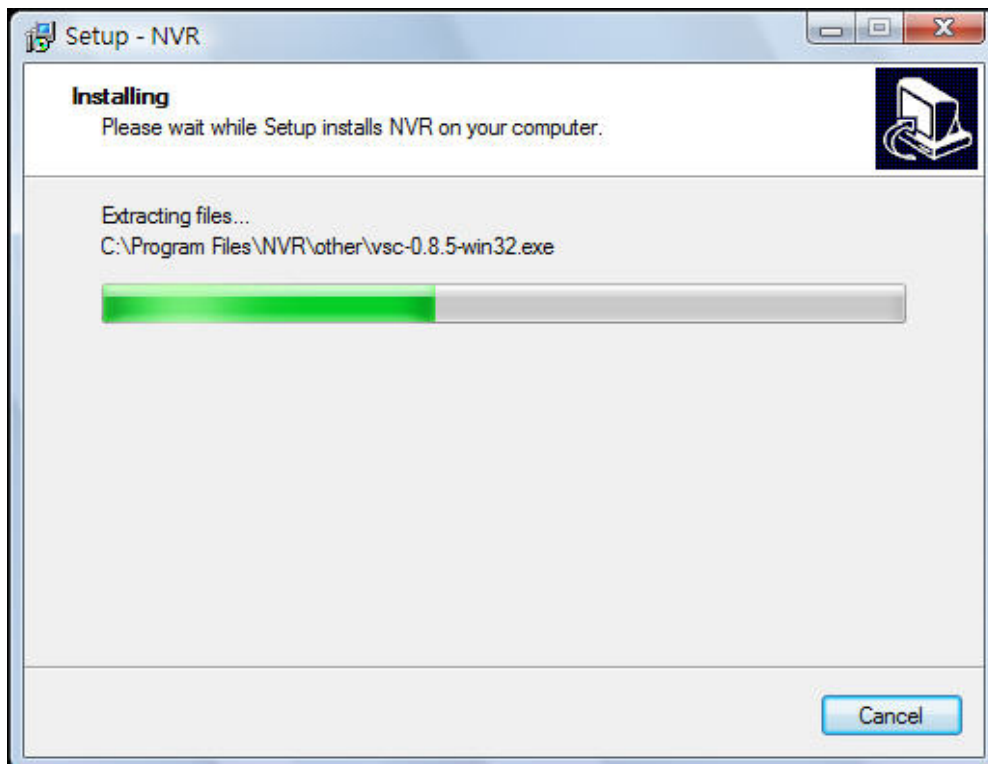
5. If you want to create a shortcut on your desktop, click **Next** to continue.



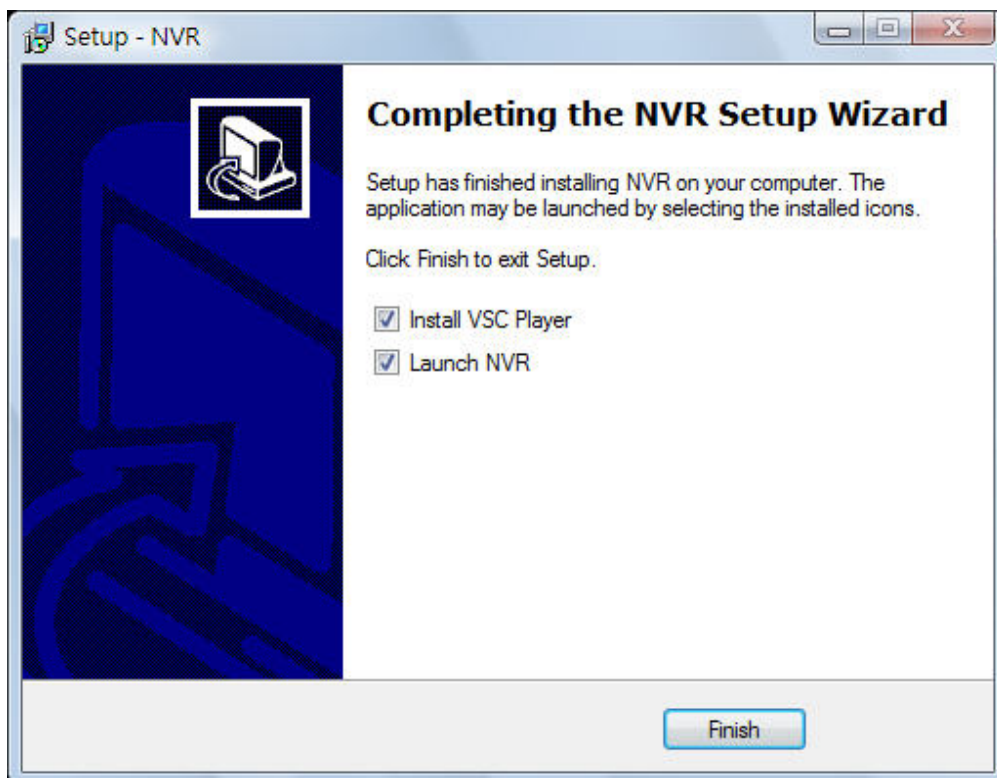
6. Select **Install** to continue.



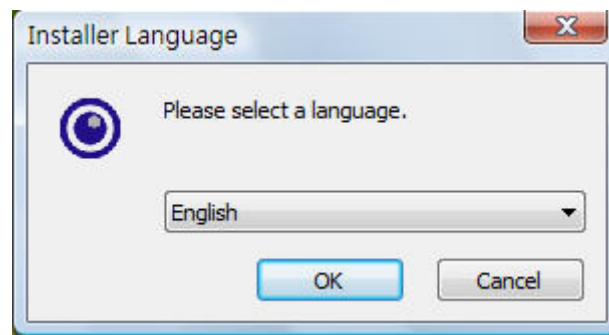
7. Wait for completion of the installation.



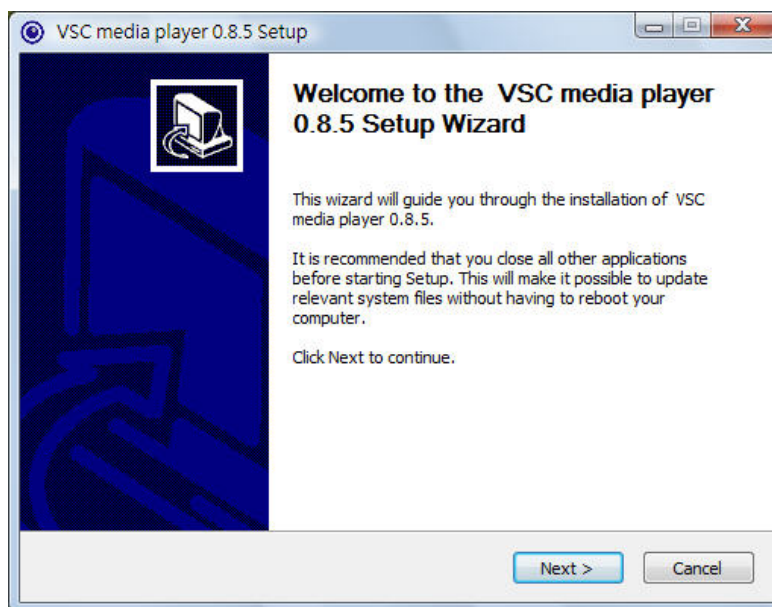
8. Click **Finish** to complete the installation. VSC Player is a video player and it is recommended to install this application. Playing images might not be possible if you use the Windows Media Player application.



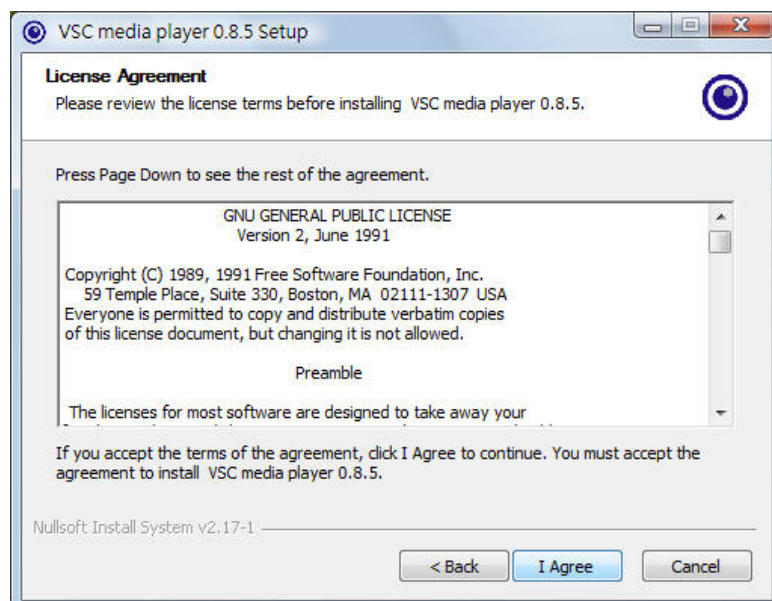
9. Click **OK** to continue if you want to use English as the default language.



10. The system is ready to install the VSC Player application. Click **Next** to continue.

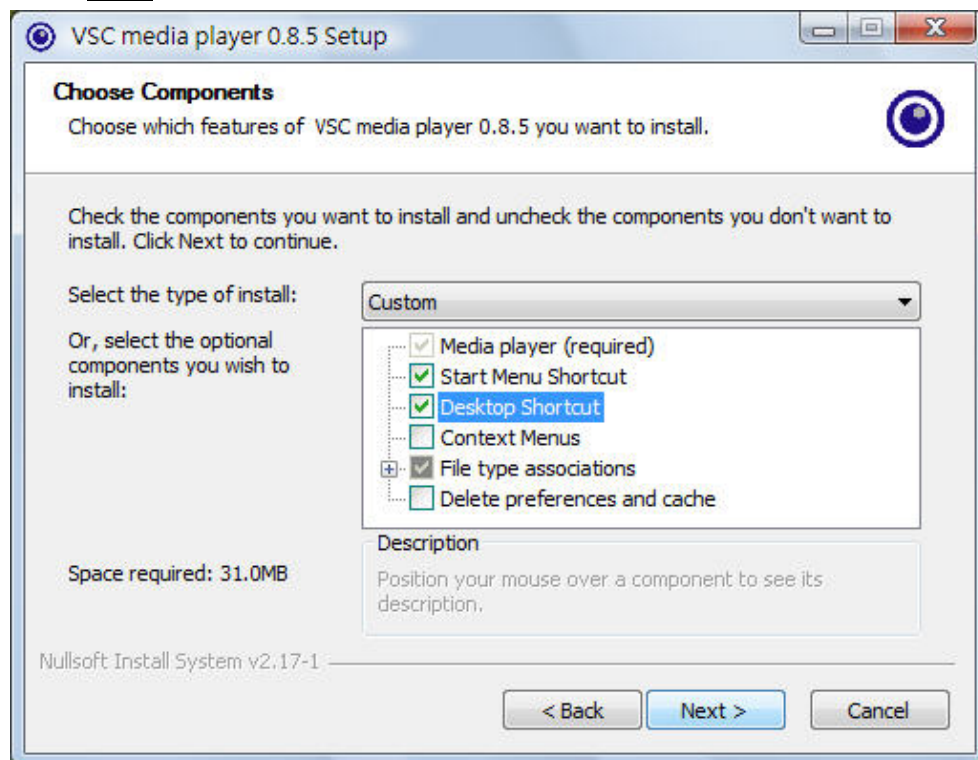


11. Click **I Agree** and select **Next** to continue.

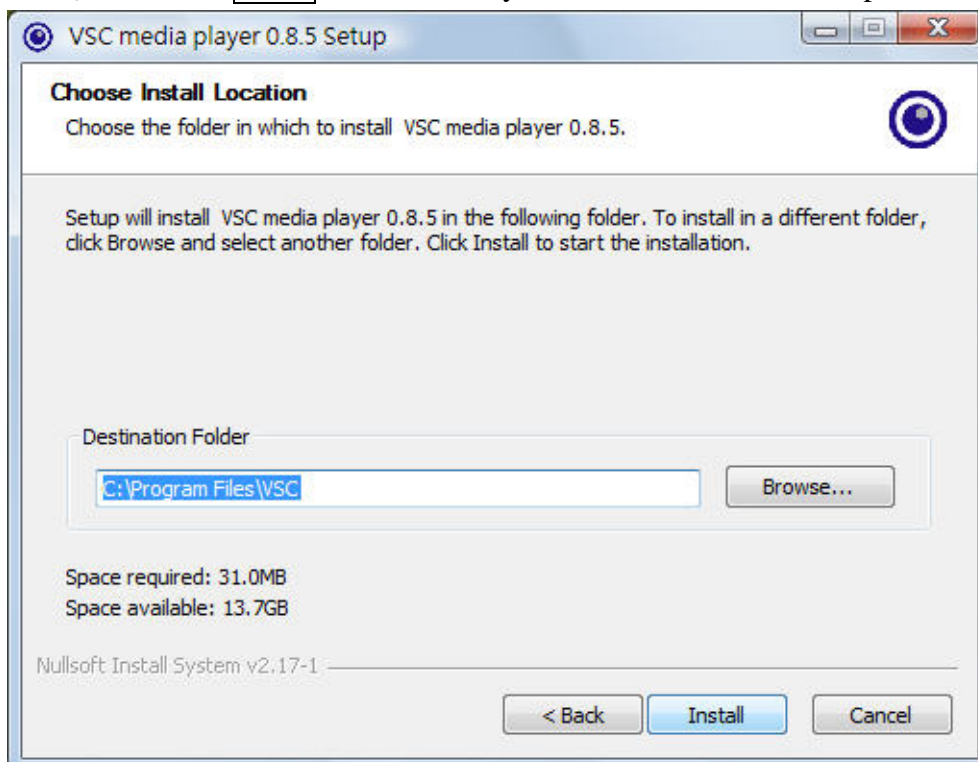




12. Click **Next**.

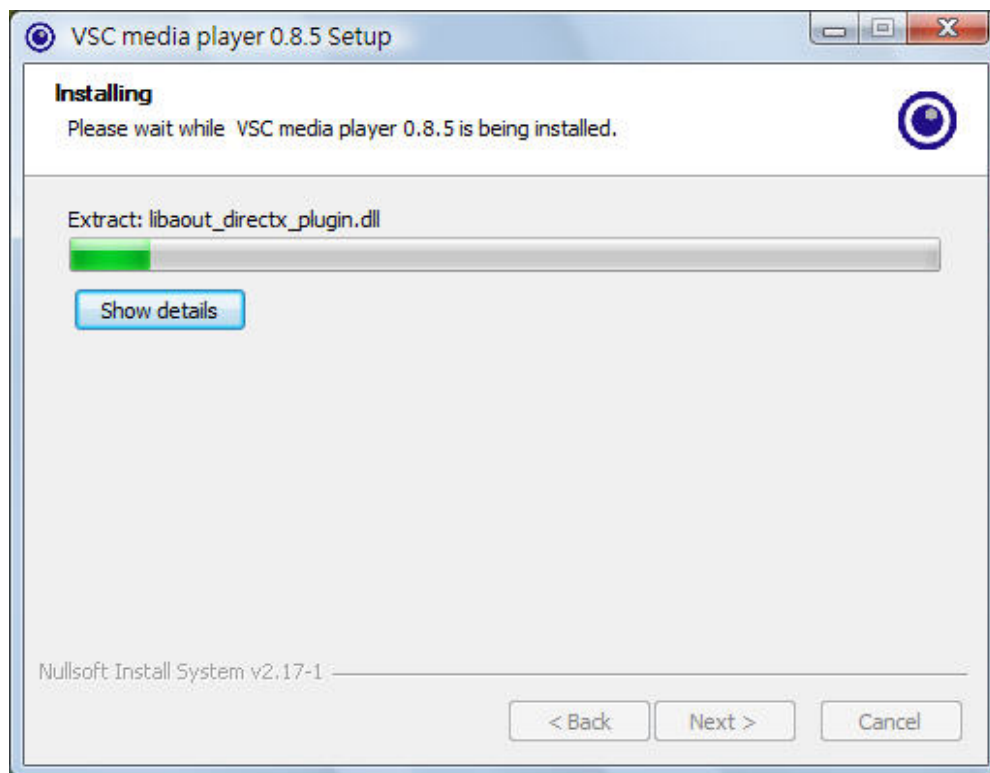


13. Select a path for installation of the application. The default path is C:\Program Files\VSC. Click **Install** to continue if you want to use this default path.

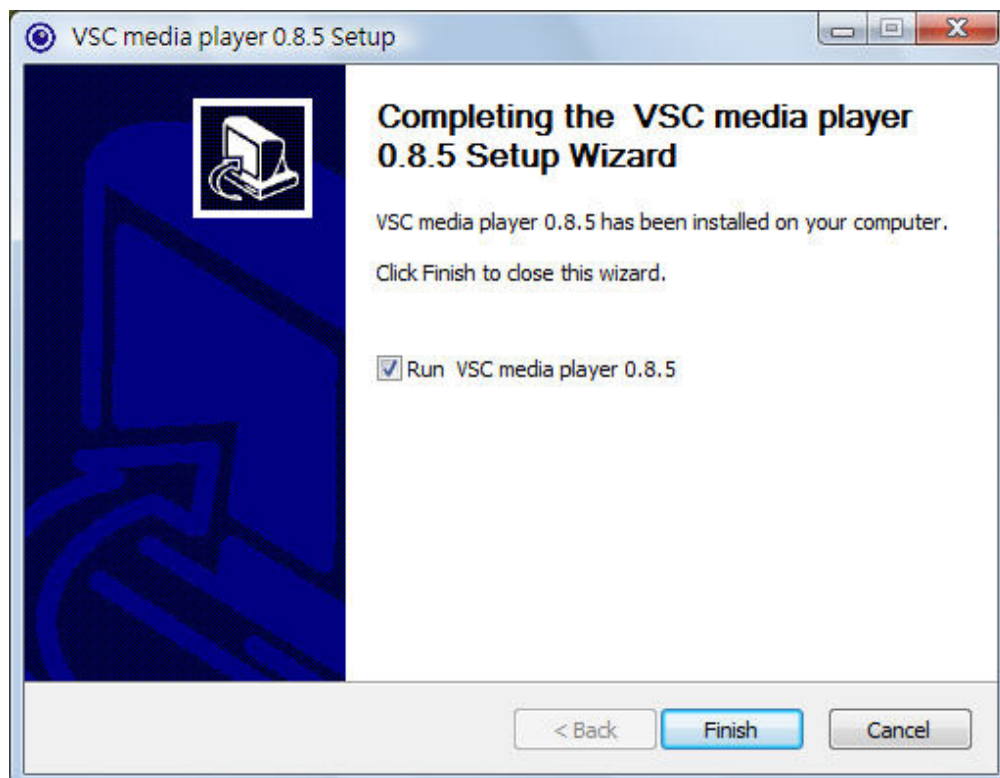





14. Wait for completion of the installation.



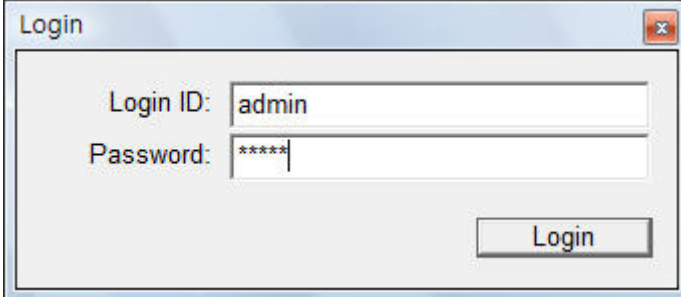
15. Click **Finish** to complete the installation.



## II. System Login

Click the "NVR" icon  on the desktop or execute the application from

**Start→Programs→NVR→NVR.**

A screenshot of a Windows-style login dialog box titled "Login". It contains two input fields: "Login ID:" with the text "admin" and "Password:" with the text "\*\*\*\*\*". A "Login" button is located at the bottom right of the dialog box.

Login

Login ID: admin

Password: \*\*\*\*\*

Login

When the Login screen appears, enter the following information and click Login if you are entering the system for the first time.

Login ID: admin

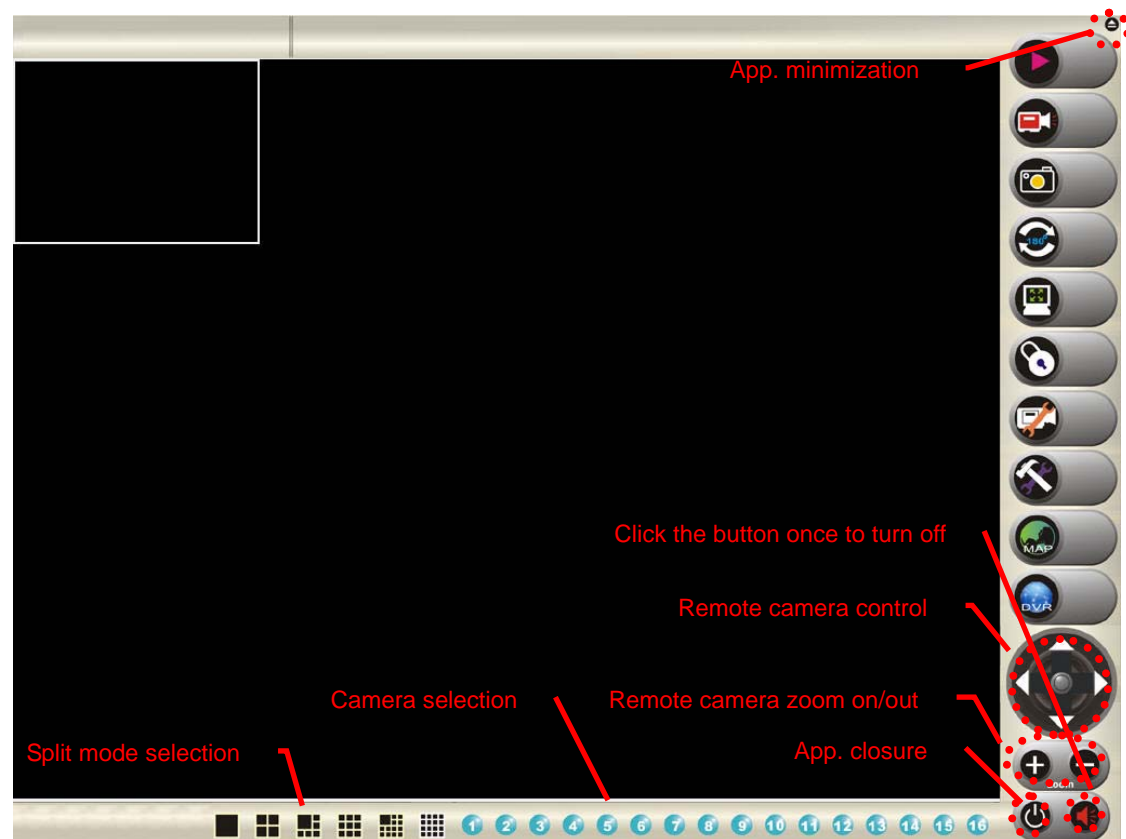
Password: admin

## III. System Operation:

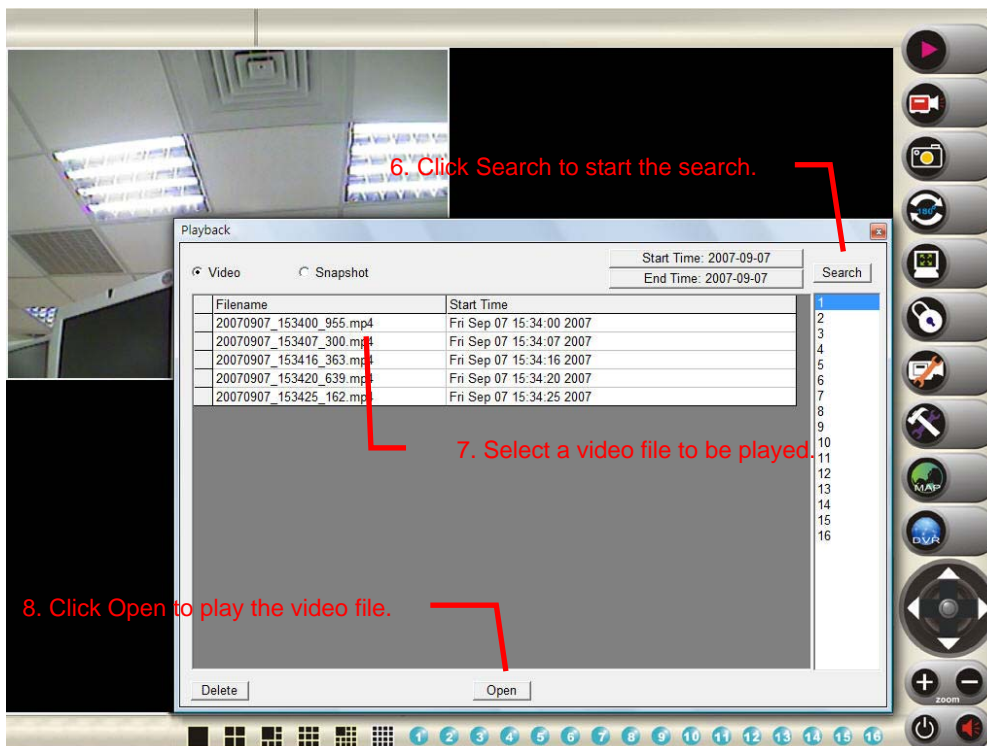
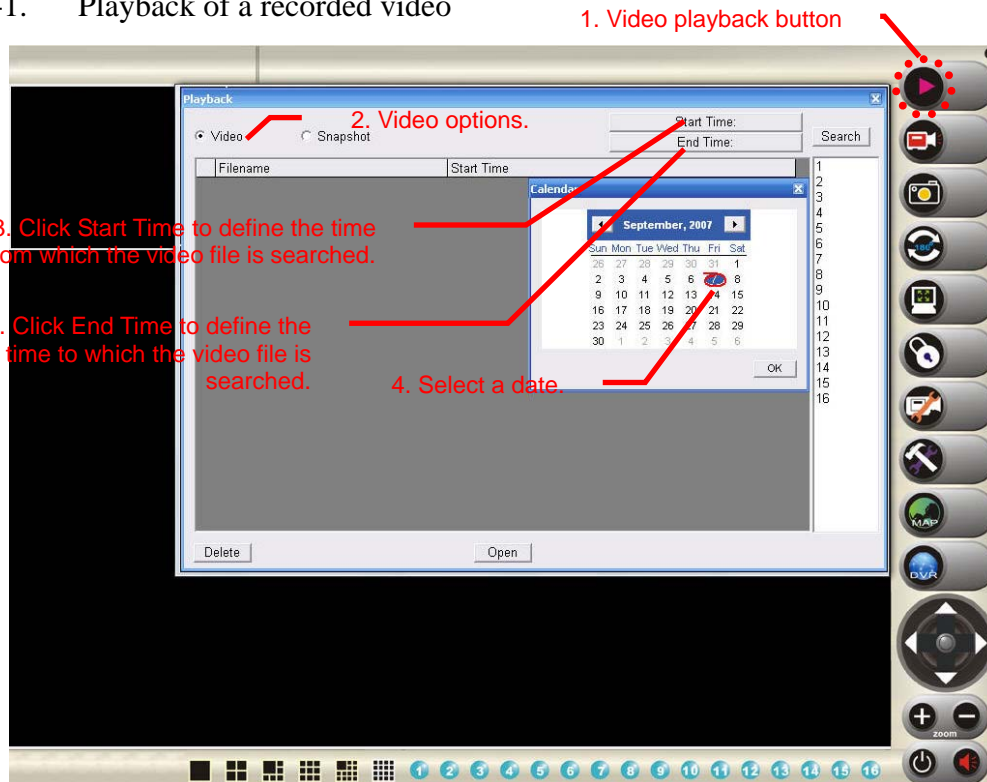
The NVR homepage appears when you log in.

### 3-1. Functions

- Remote camera control: You need to enter your login ID and password from the Channel page on the system setting screen if you want to enable this function.
- Remote camera zoom in/out: You need to enter your login ID and password from the Channel page on the system setting screen if you want to enable this function.
- Split mode selection: You can switch to the split mode in a real-time manner.
- Camera selection: You can select a camera in a real-time manner.
- Application closure: You can close the application and return to Windows.
- Application minimization: You can minimize the application and return to Windows.
- Audio off: Clicking the button once can turn off the sound picked up by the camera and the crossed-out mark appears to indicate audio off.

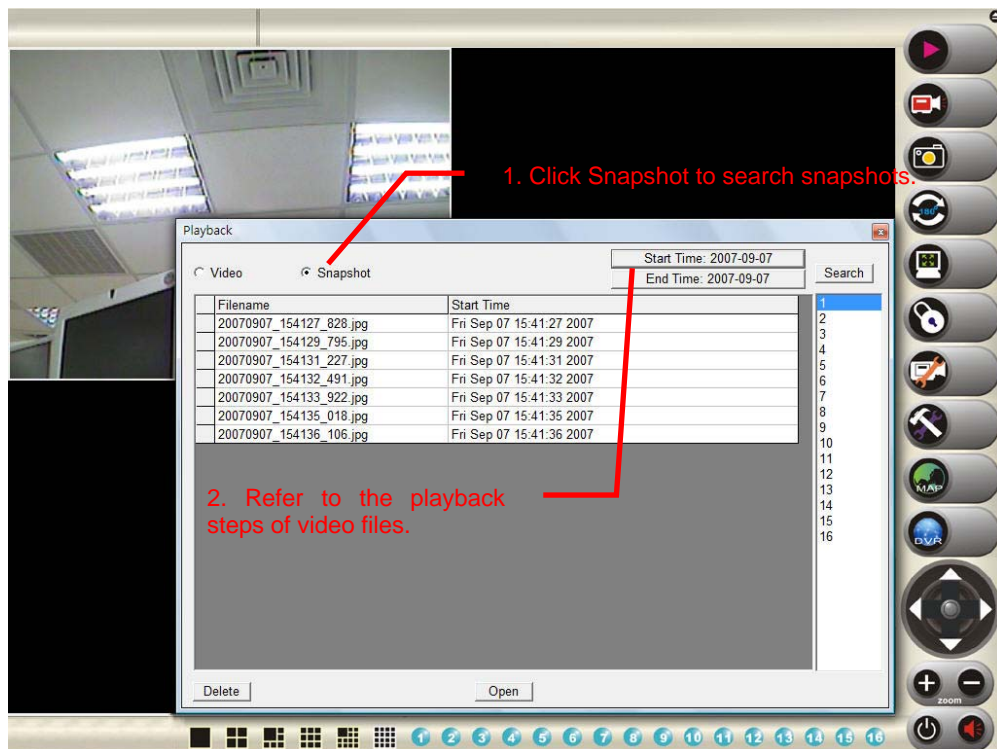


### 3-2-1. Playback of a recorded video



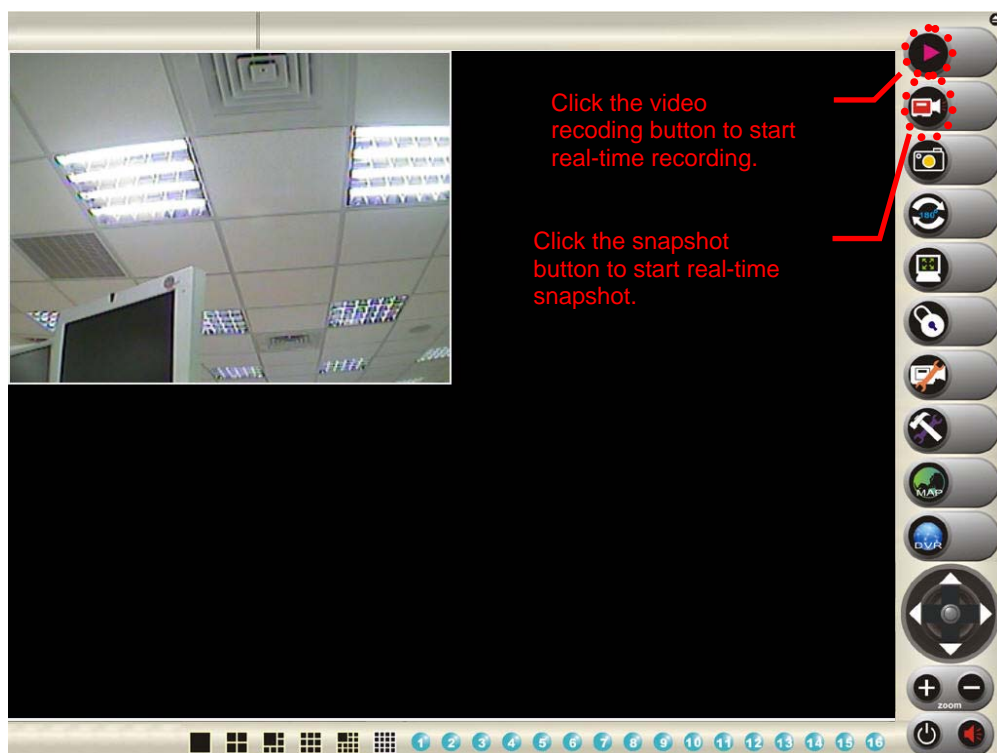
When you click Open, the program connects to the player automatically. It is recommended to use VSC Player. You can install this software following the setup of the main program. (Refer to Chapter 1.)

### 3-2-2. Playback of a recorded picture



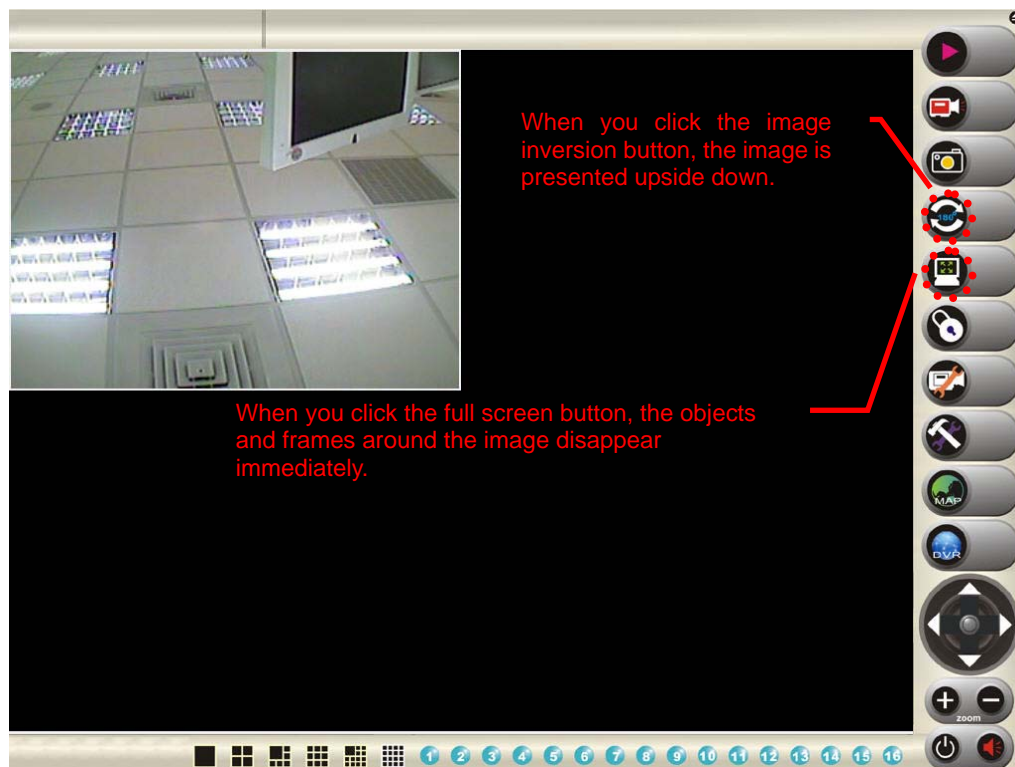
When you click Open, the program connects to the picture player automatically.

3-3. Real-time video recording function: This function is disabled while scheduling is in progress. Refer to System Setting for more information.

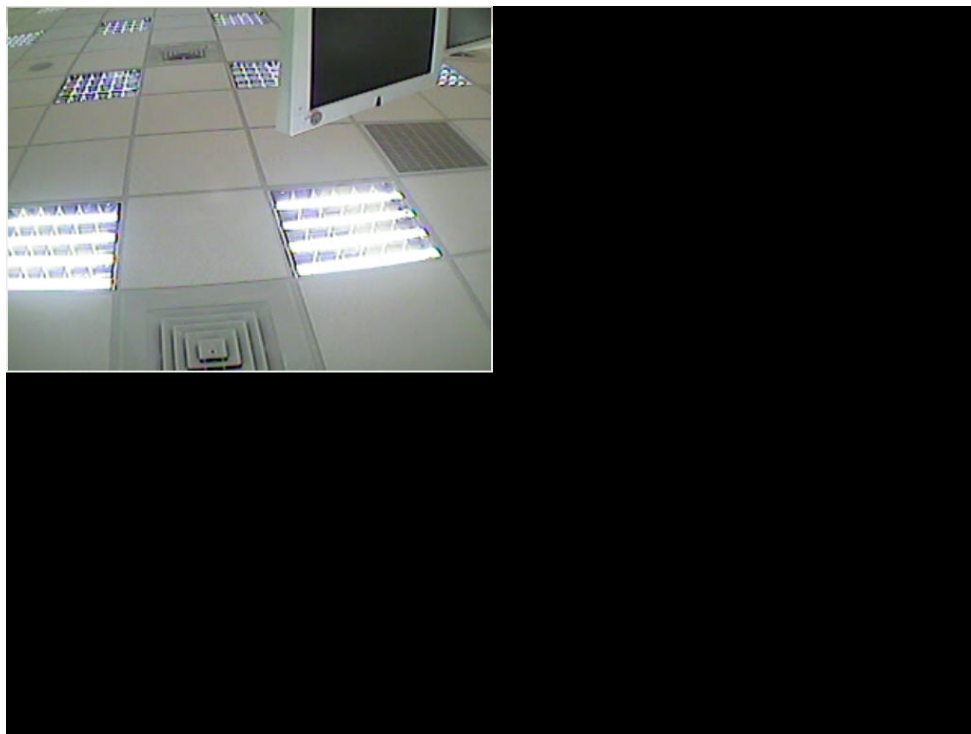


### 3-4. Real-time snapshot function

- 3-5. Image inversion function: You can use this function for cameras that are hung upside down.



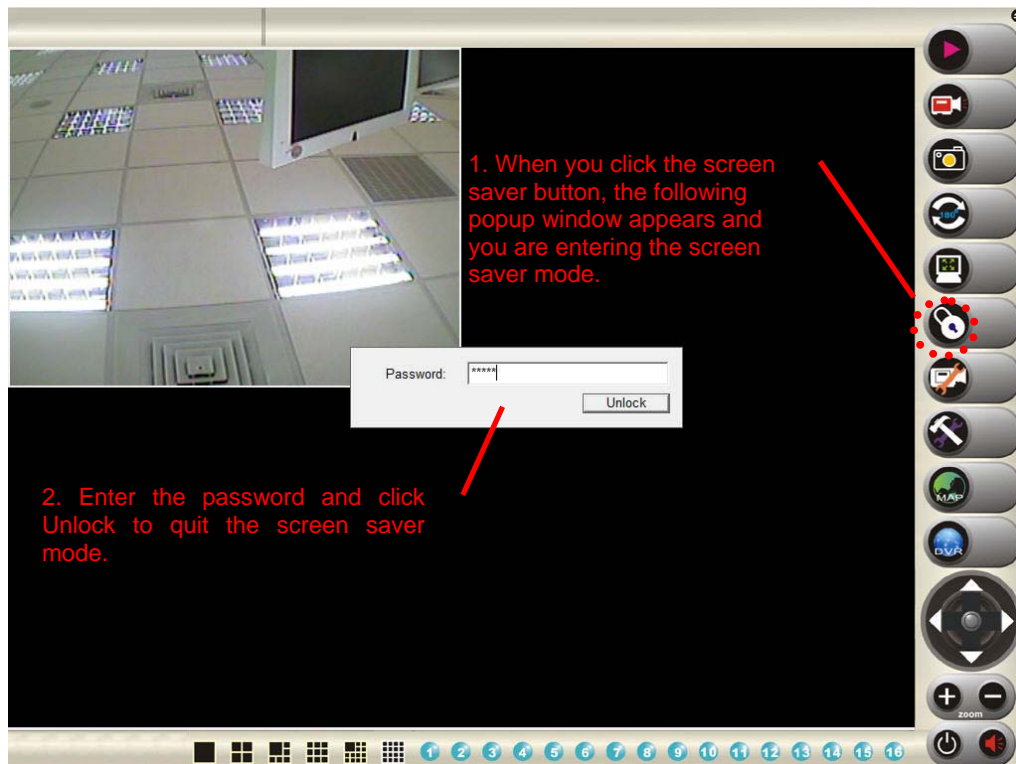
- 3-6. Full-screen function: With the full-screen function activated, you can press the Esc key on your keyboard to deactivate this function and return to the main screen.



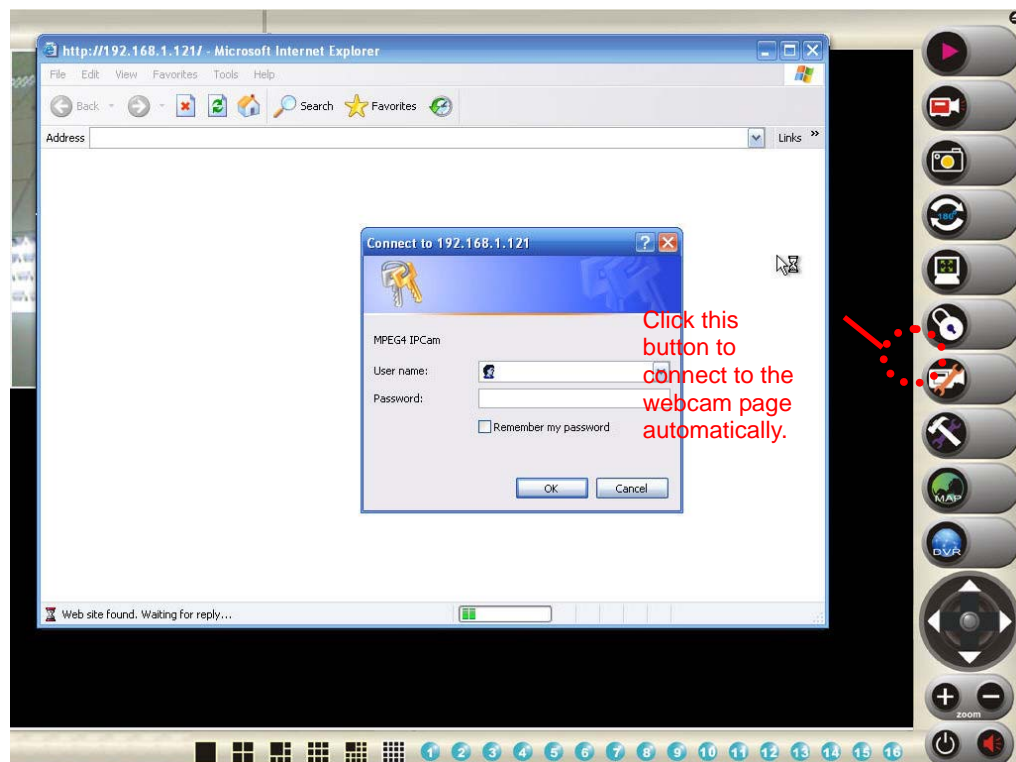
The full-screen function is activated.



- 3-7. Screen saver: You can use this function to lock all functions of the product to avoid unauthorized access. The password for this function is admin.



- 3-8. Quick connection to a camera page.

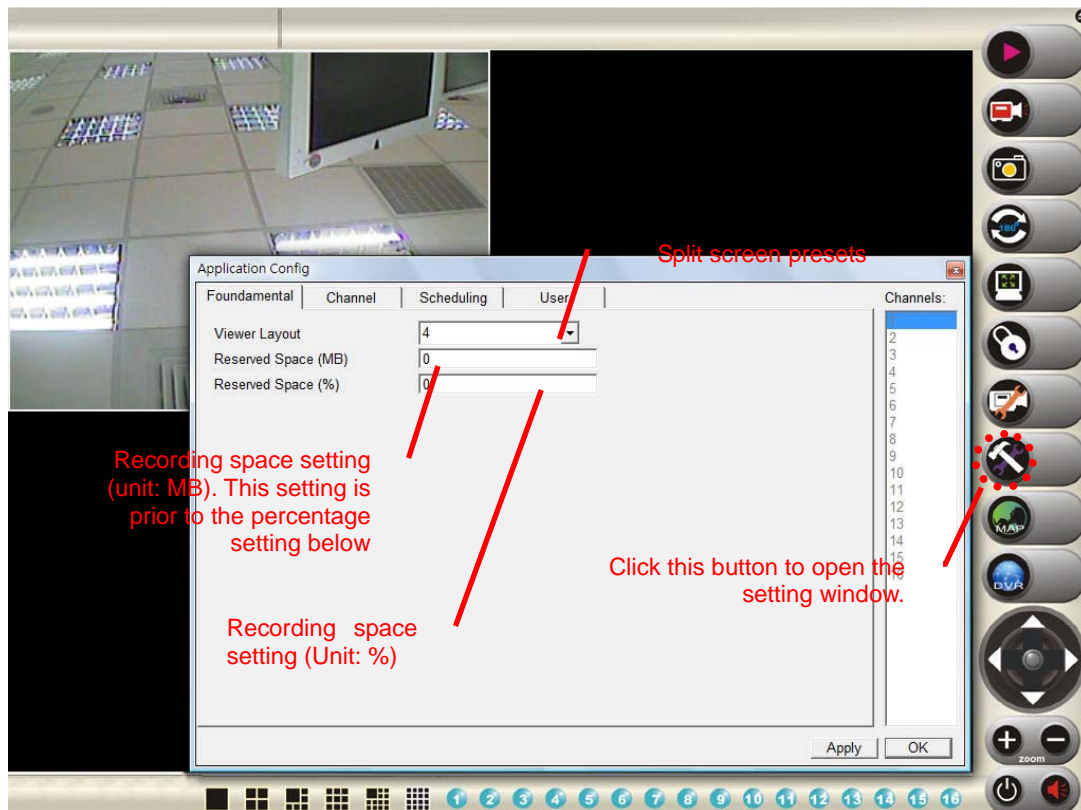




3-9. System setting: You can use this function for:

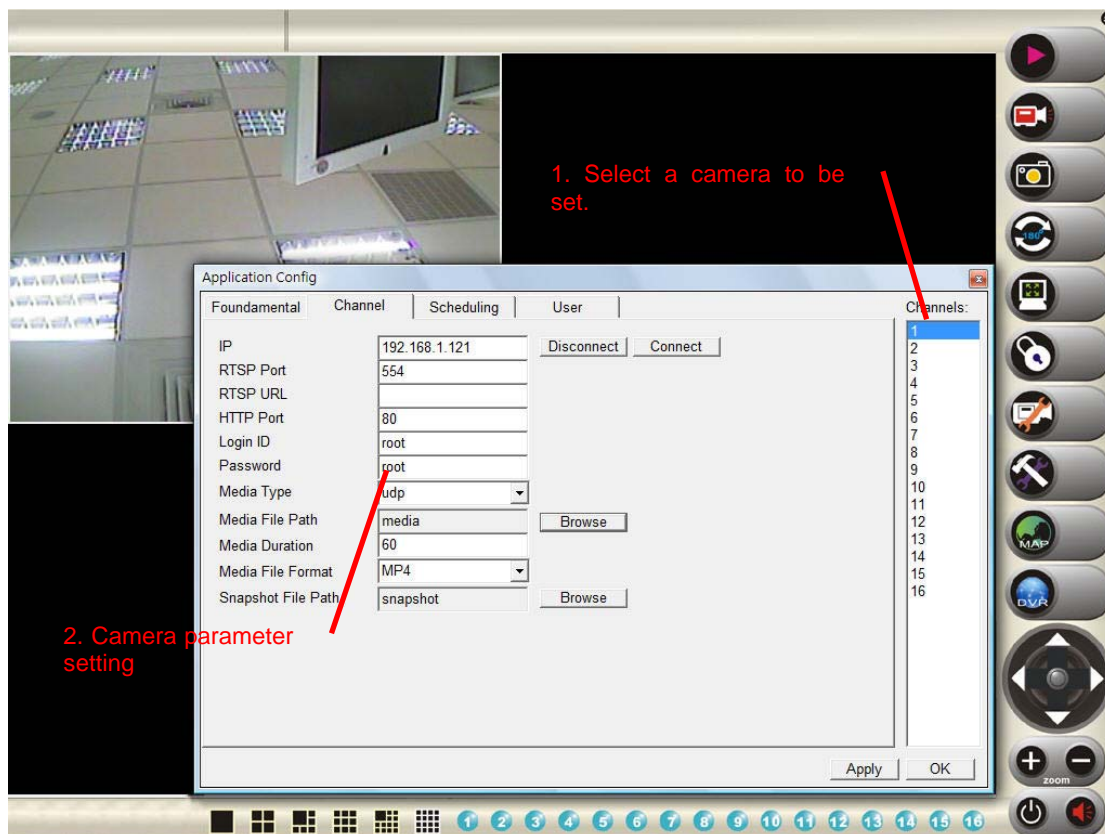
1. Fundamental: Basic settings including split screen presets and recording space settings.
2. Channel: Parameter settings for each camera.
3. Scheduling: Settings for schedule recording.
4. User: Settings for access permission.

#### 3-9-1. Fundamental: Basic settings



Fundamental: Split screen presets and recording space settings.

### 3-9-2. Channel: Parameter settings for each camera



- Channel: Parameter settings for each camera
- IP: Enter the IP address of the camera to be set. When all settings have been completed, click Connect for connection to the camera.
- RTSP Port: The TCP port with the default value 554.
- RTSP URL: If you are in the Mpeg4 mode, enter /cam1/mpeg4. If you are in the Motion Jpeg mode, enter /cam1/mjpeg.
- HTTP Port: The channel for the browser is 80 by default.
- Login ID: The login ID of the camera.
- Password: The password of the camera. Enter the login ID and password to execute remote camera control.
- Media Type: Select udp, rtsp, http for video streaming transmission. http is recommended if your network is protected with firewalls.
- Media File Path: The path for storing the recorded video files.
- Media Duration: Time for each clip of the video. (Unit: sec.)
- Media File Format: You can select MP4 or AVI as the video file format.
- Snapshot File Path: The path for saving your snapshot file.

### 3-9-3. Scheduling: Schedule recording

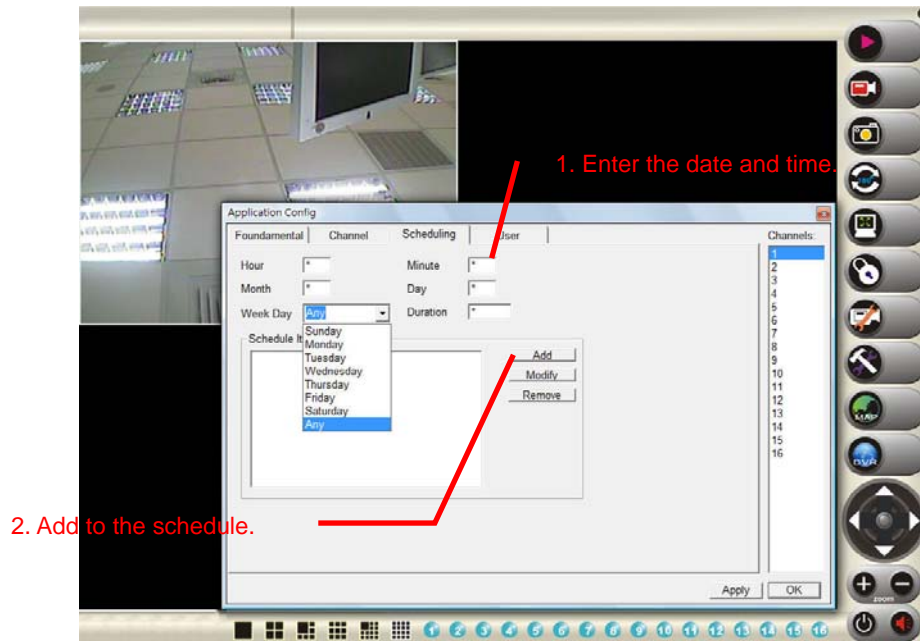
Duration: Duration of the recording to a maximum of 86,400 seconds per day. (Unit:

sec.)

Add: Add to the schedule.

Modify: Change the schedule. Enter the time and date and click Modify to complete the change.

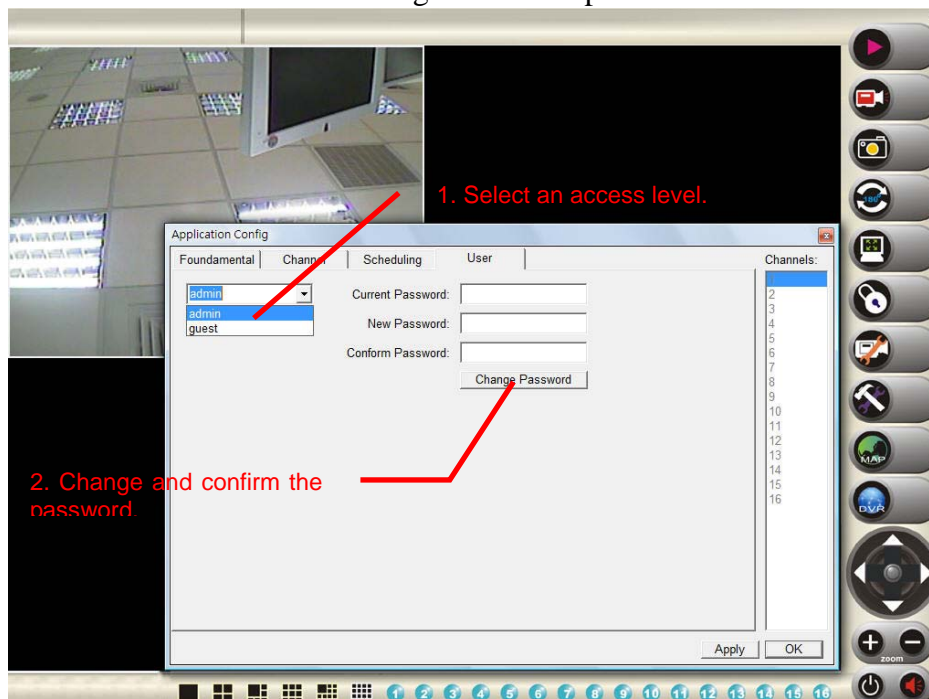
Remove: Removal of a schedule. Select the schedule to be removed and click Remove.



Scheduling: Settings for schedule recording.

### 3-9-4. User: Settings for access permission

User: Settings for access permission



### 3-10 Tips for Installation Positions

- ❑ New: Create a new map information file.
- ❑ Open: Open a map information file.
- ❑ Save: Save a map information file.
- ❑ Save As...: Save as a map information file.
- ❑ Select Map Image: Load a JPG file. It can be an interior ground plan or an actual installation picture.

